



**SPORTS PERFORMANCE CENTER**  
*An elite training facility for OSU's basketball teams*





## Building on the Legacy

Winning basketball is returning to Oregon State University, building on the legacy—the standout players, the legendary games, the national rankings.

You can be a key player in this restoration through your partnership in the construction of a new basketball practice facility.

OSU stands alone in the Pac-10 in not having dedicated practice facilities for men's and women's basketball. Completing such a facility within the Sports Performance Center is critical to helping our student-athletes succeed both on and off the court.

Meeting academic responsibilities is job one for any Pac-10 athlete. It's a challenging task, with the requirements of practice time, away-game travel, and year-round conditioning. Add the demands of class work and community service, and it is a full life indeed.

The challenges multiply for members of OSU "court" teams. Men's and women's basketball, volleyball, gymnastics, and wrestling all wedge practice and competition time into Gill Coliseum. Consequently, practices conflict with academic schedules, and OSU basketball players are frequently juggling athletic practice and core academic courses.

A basketball practice facility is essential for teams that rely on academic success, competitive recruitment, superior court skills, and team-first preparation for competition and life.



*"OSU has a winning basketball history, which means you're not creating a culture, you're reinvigorating it. This is a one-time investment with exponential returns for reviving OSU as a basketball powerhouse and creating a national reputation for the university."*

**—Craig Robinson, Head Coach, OSU Men's Basketball**

*In 2009 Craig Robinson led the OSU men's basketball team to victory in the CBI Championship and was named District IX Coach of the Year by the United States Basketball Writers Association.*

## A New Home for Basketball

Planned as a 34,500-square-foot four-story structure, OSU's impressive new practice facility will contain two regulation basketball courts modeled after facilities at the universities of Florida and Kentucky. The courts will occupy the first and third floors of the building, along with locker rooms, satellite training and medical areas, and service and mechanical spaces.

The alternate floors—second and fourth—will consist of 2,000-square-foot partial floors containing coach and program staff offices. These spaces run the length of the building and offer panoramic views of the court below. Together, the court and program space create a “home” where the sense of family that is the distinctive edge for every OSU team can be fostered.

A two-story glass atrium, strikingly illuminated at night, will serve as the main entrance and feature a Basketball Hall of Fame highlighting the greatest achievements and players of OSU's past—and future! A mural stretching to the height of the atrium will celebrate the legacy—and the terrific student-athletes and coaches—of Oregon State basketball.



*“The new first-rate practice facilities will support our student athletes and will add to the exceptional athletic environment on OSU’s campus. The facilities will provide the OSU basketball programs with the greatest opportunity to grow, succeed, and attract superior athletes to build on the distinguished tradition of Beaver athletics.”*

**—Scott Rueck, Head Coach, OSU Women’s Basketball**

*In 2009 Scott Rueck guided the George Fox women’s basketball team to the Division III national title, and he was named the National Coach of the Year by the WBCA and D3hoops.com.*



# Your Investment

Time and again, new athletic facilities have sparked a dramatic turn in the performance of OSU athletic teams. The Valley Football Center, Truax Indoor Practice Field, and enhancements to Reser Stadium were pivotal in propelling OSU football to the top echelon of Pac-10 play and consistent appearances—and victories—in bowl games. Goss Stadium was central to establishing a great baseball tradition that has culminated, so far, in two NCAA championships. The new basketball practice facility likewise will have an immediate and lasting impact on programs at Oregon State.

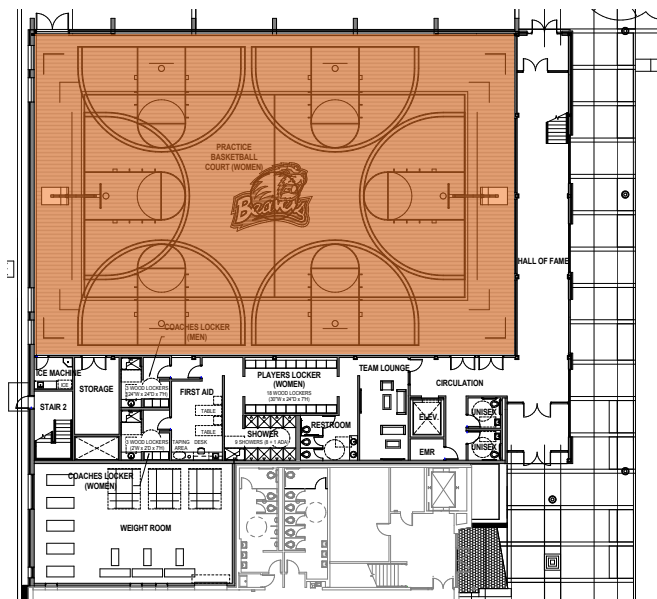
*Be a part of OSU basketball's bright future!*

## CONTACT US

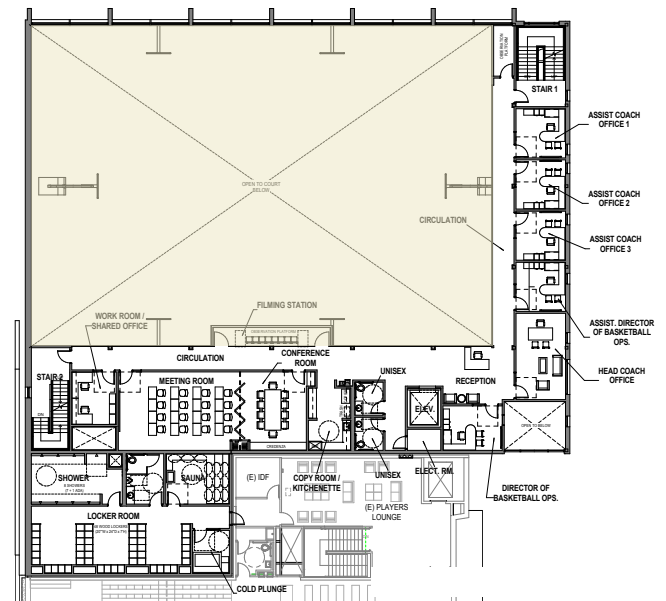
To make a gift or to learn more, please contact:

**Dan Peterson, J.D.**  
 Assistant Vice President, Gift Planning  
 OSU Foundation  
 503-553-3414  
 Dan.Peterson@oregonstate.edu

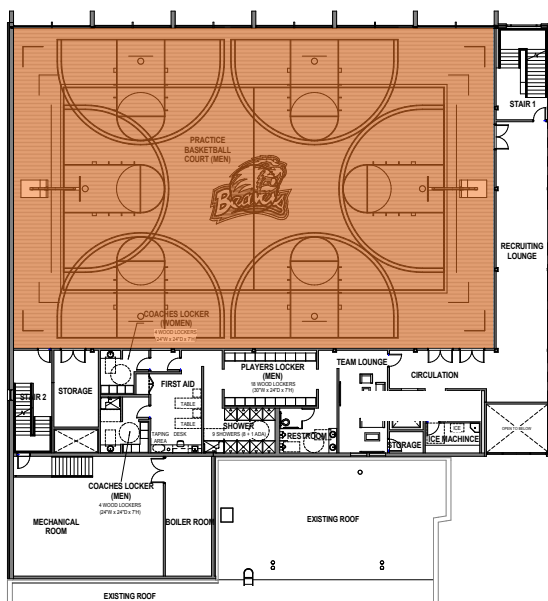
1ST FLOOR



2ND FLOOR



3RD FLOOR



4TH FLOOR

